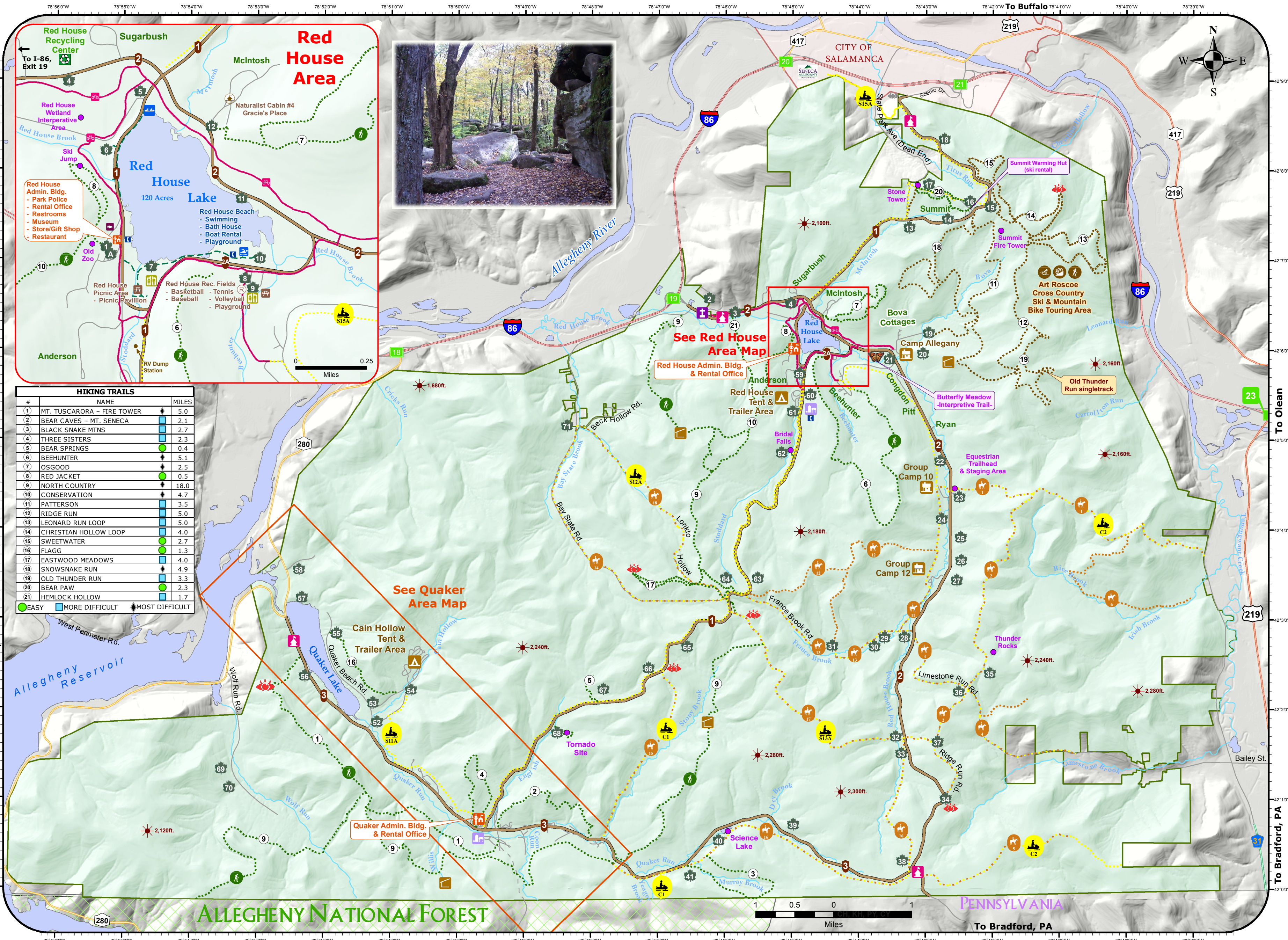


ALLEGANY STATE PARK VISITOR MAP



Allegheny State Park Contact Information

Camping Reservations: 800-456-CAMP
 Red House Rental Office: 716-354-9121
 Quaker Rental Office: 716-354-2182
 Administration Office: 716-354-9101
 NYS Parks Website: parks.ny.gov
 Online Reservations: newyorkstateparks.reserveamerica.com

Park Concessions
 J-Con Parks - Main Office and Information: 716-354-9163
 Summit Ski Shop - weekends only: 716-945-0523
 Red House Gift Shop - 716-354-9282
 Red House Restaurant: 716-354-2030

Park Police: 716-354-9111 or 911
 In case of a fire or medical emergency Dial 911

NEW YORK STATE OF OPPORTUNITY.

Parks, Recreation and Historic Preservation

This map was created using GIS & GPS technology. Prepared by Cattaraugus County www.cattco.org

Chris Holewinski - GIS Coordinator
 Daniel T. Maronis - Real Property & GIS Director
 *Interactive map of cabins/cottages/campsites, trails and other park amenities available at: <https://maps2.cattco.org/asp>

Updated: July, 2019

Admin. Bldgs.	Entrance Booth	Chapel	Bike Path	Park Routes
Aquatics	Recycling Center	Picnic Area	Cross Country, Hiking, & Mountain Biking	I-86
Athletic Fields	Restrooms	Group Camp	Equestrian	US Highway
Boat Launch	Store	Tent Camp	Equestrian / Snowmobiling	NYS Highway
Canoe Launch	Museum	Lean-to	Equestrian / Snowmobiling / Hiking	County
Amphitheatre	Scenic View	Cabin Areas	Hiking	Other
Program Site (obtain # info at rental offices)	Point of Interest	Elevation Pts.	Walking Path (Around Red House Lake)	I-86 Exits
			Snowmobile	

